

StickyMat 12 V



Overview

The Warmup StickyMat 12 V mat is the perfect heating system for both wall and floor heating applications. Using StickyMat 12 V on walls means heating the bathroom is that much easier and eliminates the need for radiators for greater design freedom.

The mat is available in a lower wattage (100 W/m^2) than traditional StickyMat systems. This reduced wattage results in a lower surface temperature making them also suitable and safe for installation on spa benches and loungers.

The mat has been specifically designed to operate at Separated Extra Low Voltage (SELV) with a rated voltage not exceeding 12 V AC and IPX7 rating which means the mat can be safely installed within bathroom Zones 0, 1, 2 and outside of zones in line with National Wiring Regulations.

The StickyMat 12 V mat is ideal for regularly shaped rooms as the 0.5 m wide mats can be easily applied to walls or floors in parallel runs and securely fixed to the substrate with the self-adhesive mesh, making installation quick and easy.

The pressure sensitive adhesive on the mesh securely binds the mats to the substrate, keeping them flat and ensuring the application of tile adhesive is snag free whilst allowing the mats to be easily repositioned as needed.

The StickyMat 12 V is thinner than our traditional StickyMat range with slim line end cap and cold tail joint which doesn't increase floor / wall levels.



Electric
Heating System

0345 345 2288

uk@warmup.com
www.warmup.co.uk

Warmup

The world's best-selling floor heating brand™

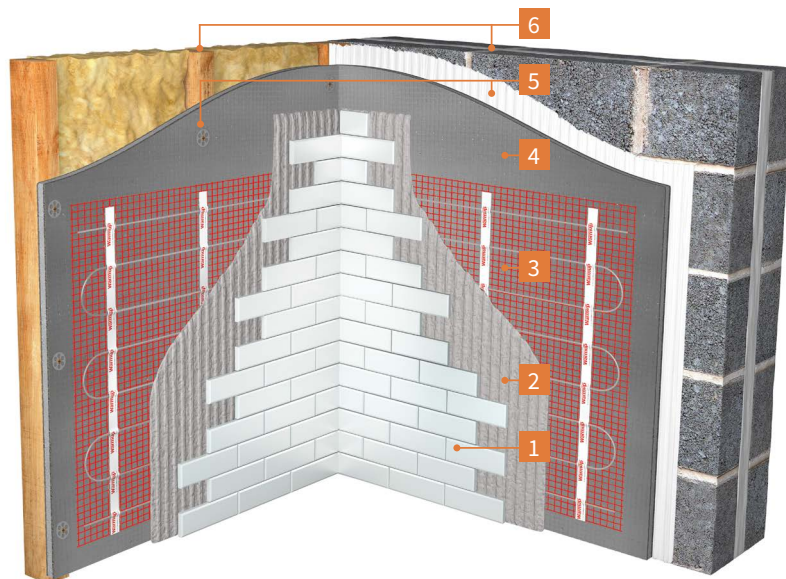
Features

- Suitable and safe for installation on walls, floors and special applications such as spa benches and loungers due to reduced 100 W/m² output
- Tested to IEC 60335-1 under General Product Safety Directive, supplied at Separated Extra Low Voltage and IPX7 Rated meaning that is safe to install in bathroom Zones 0, 1, 2 and outside of zones in line with National Wiring Regulations
- Eliminates condensation and mould growth in heated areas.
- Thinner than our traditional StickyMat range with slim line end cap and cold tail joint which doesn't increase floor or wall levels.
- Ideal for regular shaped rooms, where the 0.5 m wide mats can be rolled out in parallel runs.
- Pressure sensitive adhesive securely binds the mats to the floor or wall keeping them flat for fast and secure installation.
- CE marked 
- Lifetime Warranty & SafetyNet Installation Guarantee.  

Substrates

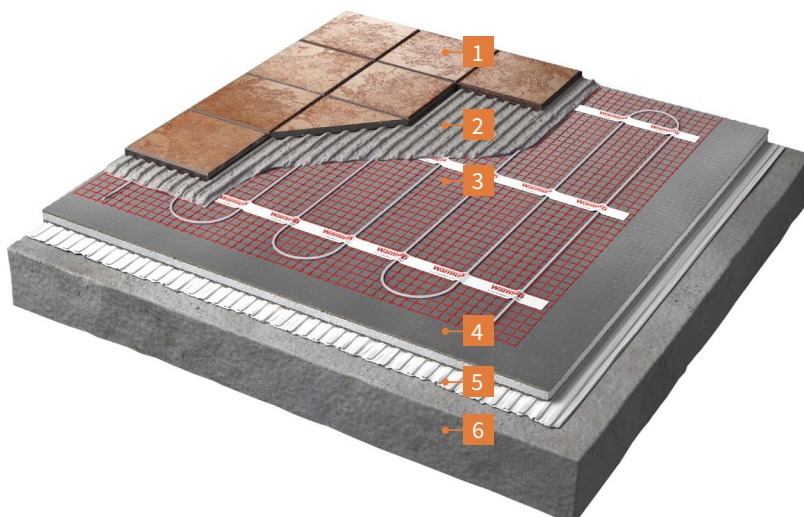
RECOMMENDED WALL CONSTRUCTION

- 1 Wall finish
- 2 Flexible tile adhesive or plaster
- 3 Warmup StickyMat 12V
- 4 Warmup Insulation Board
- 5 Flexible Tile Adhesive (Solid Walls)
Screw and Washer (Stud Walls)
- 6 Solid / Stud Wall



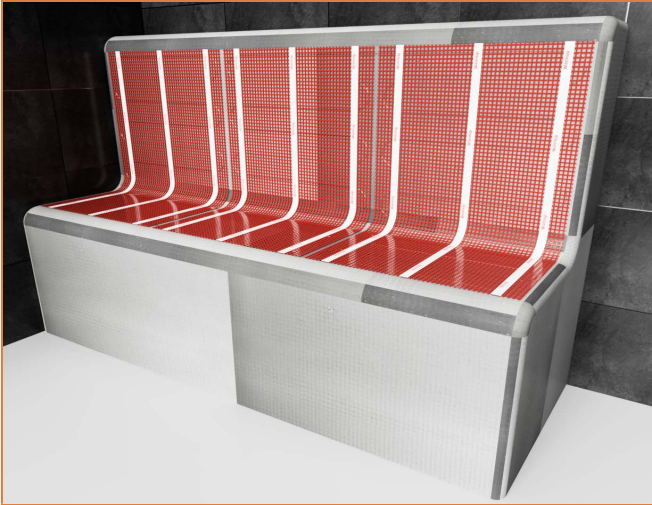
RECOMMENDED FLOOR CONSTRUCTION

- 1 Floor finish
- 2 Flexible tile adhesive or levelling compound
- 3 Warmup StickyMat 12 V
- 4 Warmup Insulation Board
- 5 Flexible Tile Adhesive
- 6 Subfloor



Alternative Applications

SPA BENCHES



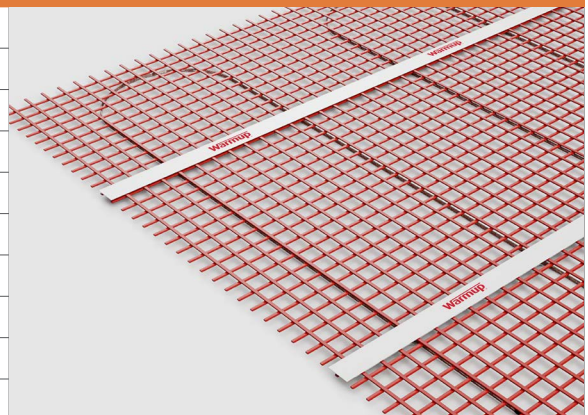
SPA LOUNGERS



Technical Specifications

TECHNICAL SPECIFICATIONS - StickyMat 12 V (100 W/m²)

OPERATING VOLTAGE	SELV 12 V AC : 50 Hz
OUTPUT RATING	100 W/m ²
WIDTH	500 mm (0.5 m)
MAT THICKNESS	0.5 mm
CABLE DIMENSIONS	1.6 x 3.2 mm
HEATING CORES	Multi-strand
INSULATION	ETFE
IP RATING	IPX7
MIN. INSTALLATION TEMPERATURE	- 10 °C
CONNECTION	3 m "coldtail" connection



MAT SIZE GUIDE - StickyMat 12 V (100 W/m²)

PRODUCT CODE	HEATED AREA (m ²)	POWER (W)	LOAD (A)	RESISTANCE (Ω)	REFERENCE RESISTANCE BANDS (Ω)
SM12V-M0.5	0.5	50	4.2	2.88	2.74 - 3.02
SM12V-M1	1	100	8.3	1.44	1.37 - 1.51
SM12V-M1.5	1.5	150	12.5	0.96	0.91 - 1.01

KITS - StickyMat 12 V (100 W/m²)

PRODUCT CODE	DESCRIPTION	MAT COMBINATION	HEATED AREA (m ²)
SM12V-0.5	Warmup StickyMat 12 V , 100 W/m ² (Mat and Transformer)	0.5 m ² mat	0.5 m ²
SM12V-1	Warmup StickyMat 12 V , 100 W/m ² (Mat and Transformer)	1 m ² mat	1 m ²
SM12V-1.5	Warmup StickyMat 12 V , 100 W/m ² (Mat and Transformer)	1.5 m ² mat	1.5 m ²
SM12V-2	Warmup StickyMat 12 V , 100 W/m ² (Mat and Transformer)	1 + 1 m ² mat	2 m ²
SM12V-2.5	Warmup StickyMat 12 V , 100 W/m ² (Mat and Transformer)	1.5 + 1 m ² mat	2.5 m ²
SM12V-3	Warmup StickyMat 12 V , 100 W/m ² (Mat and Transformer)	1.5 + 1.5 m ² mat	3 m ²

WARMUP COMPONENTS

Transformer

Safety isolating transformer for the safe electrical isolation of the input and output sides. The transformer is suitable for creating SELV circuits with 2 x 12 V AC outputs suitable for use with StickyMat 12 V mats, maximum 300 VA.

Tested to VDE 0570 Part 2-6, DIN EN 61558-2-6, EN 61558-2-6, IEC 61558-2-6



Insulation Boards

Warmup® Insulation Boards are a water resistant, insulated tile backer board made of extruded polystyrene, faced on both sides with a fibre-glass mesh embedded into a thin cement polymer mortar.

They have high thermal insulation properties for energy efficiency and an added benefit of sound absorption.

Warmup Insulation Boards have zero Ozone Depletion Potential (ODP) and a Global Warming Potential (GWP) of less than 5



Thermostat



4iE® SMART WIFI THERMOSTAT

For Central Heating and Underfloor Heating Systems

Connected to the internet by WiFi, it can be controlled from a smart phone, tablet or computer as well as its own touchscreen interface. It learns how homeowners use their heating and the unique way each zone reacts. It uses this knowledge to suggest ways to save energy, such as what temperature should be set when the area is not in use and when the heating can be turned off earlier with no noticeable impact on comfort.

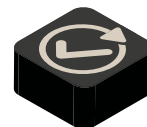
Personalise your 4iE with uploadable photo backgrounds and changeable, textured overlays.



SmartGeo™
Always at the right temperature automatically, and up to 25% lower energy usage. Just like magic.



EasySwitch™
Always on the best tariff, automatically. Saving on average £210.



Easy to use
Simple and secure set up using WiFi, with 24/7 technical support.